



DATA SHEET

DC Leakage Current Sensor

PN: CHD_CRS15D5

IPN=10~1000mA

Feature

- DC Leakage Current Sensor develops on base of magnetic modulation closed loop principle
- Apply unique patented technology for measure tiny current (mA level)
- Supply voltage: DC ± 12 V

Advantages

- High accuracy
- Easy installation
- Wide current measuring range
- Optimized response time
- Low power consumption
- High immunity to external interference
- Very good linearity
- Can be customized

Applications

- The current detection of the lift
- DC panel detection
- The signal system
- Current differential detection
- AC variable-speed drive/ Servo drive
- UPS and Inverter applications



RoHS

Electrical data:

	CHD10 CRS15D5	CHD20 CRS15D5	CHD50 CRS15D5	CHD100 CRS15D5	CHD200 CRS15D5	CHD500 CRS15D5	CHD1000 CRS15D5
Rated input I _{pn} (DC)	± 10 mA	± 20 mA	± 50 mA	± 100 mA	± 200 mA	± 500 mA	± 1000 mA
Measuring range I _p (DC)	0~ ± 20 mA	0~ ± 50 mA	0~ ± 100 mA	0~ ± 200 mA	0~ ± 300 mA	0~ ± 800 mA	0~ ± 1200 mA
Load impedance (at rated current)	≥ 10 K Ω						
Output voltage V _o (V)	DC ± 5 V (± 1 %)						
Supply voltage V _C (V)	DC ± 12 V~ ± 15 V (± 5 %)						
Accuracy X _G (%)	@IPN, T=25°C			± 1 %			
Linearity (%FS)	<1%						
Offset voltage V _{OE} (mV)	T _A =25°C			< ± 50 mV			
Offset Voltage drift V _{OT} (mV/°C)	IP=0 T _A =-10~+60°C			< ± 2			
Current consumption I _C (mA)	<20mA						
Insulation voltage	@50/60Hz, 1min			2.5kV rms			



Cheemi Technology Co., Ltd

Tel: 025-85996365

E-mail: info@cheemi-tech.com

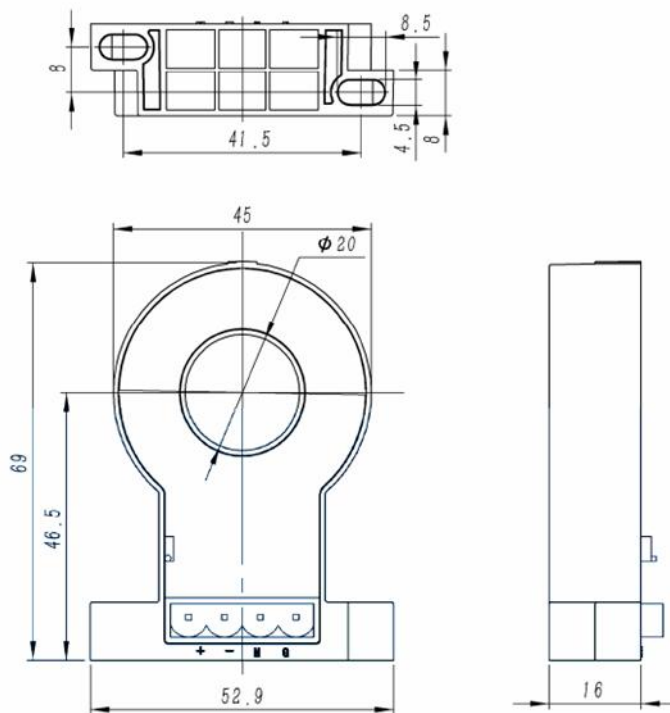
www.cheemi-tech.com

Add: N22, Xianlongwan, Xianyin South Road, Qixia District, Nanjing - China.

General data:

Parameter	Value
Operating temperature TA(°C)	-25 ~ +70
Storage temperature TS(°C)	-40~ +85
Plastic material	PBT G30/G15, UL94- V0;
Standards	IEC60950-1:2001
	EN50178:1998
	SJ20790-2000

Dimensions(mm):



General tolerance: $\pm 0.5\text{mm}$

Primary through-hole: $D20+0.2\text{mm}$

Pin definition:

1: + (VCC)

2: - (VCC)

3: M (Vout)

4: G(GND) OFS: Zero adjustment

Remarks:

- The wrong wiring may lead to damage of sensors, after the power supply when the electric current to be measured through the sensor direction arrow, can be measured at the output end in phase voltage value.
- When the current goes through the primary pin of a sensor, the voltage will be measured at the output end.
- Custom design is available for the different rated input current and the output voltage.
- The output of the sensor amplitude can be adjusted as appropriate to the user requirement
- The dynamic performance is the best when the primary hole is fully filled with.
- The primary conductor should be $<100^{\circ}\text{C}</math>.$

WARNING : Incorrect wiring may cause damage to the sensor.



Cheemi Technology Co., Ltd

Tel: 025-85996365

E-mail: info@cheemi-tech.com

www.cheemi-tech.com

Add: N22, Xianlongwan, Xianyin South Road, Qixia District, Nanjing - China.